



Darbee Reveal™

Overview

Reveal is a NEW DarbeeVision technology that creates a profound level of image clarity, with three new image enhancement modes. Details that were previously obscured will be enhanced. Fog, haze and poor light conditions are automatically compensated for.

Darbee Reveal goes beyond conventional image processing for de-fogging, de-hazing, rainy, snowy and low quality lighting conditions. Enabled by parallel processing in a single chip, Darbee Reveal represents the next generation of computational image processing for clarity and quality. **See targets of interest more clearly!**
(Sample image on next page)

Form

- **Video Processor Module** installs between any HDMI source and display
- **Easy to set up** – no installation
- **Easy to use** – simple controls
- **Compact Form Factor**
- **HDMI 1.4 compliant** for the highest fidelity

Features

- Three new image enhancement viewing modes that lift fog, haze, and correct lighting
- HDMI 1.4 compliant
- One HDMI Input, one HDMI Output
- Resolutions from 480i, 480p, 720p, 1080i, 1080p, and most computer formats
- Deep color capable, 36-bit 4:4:4
- On screen menu to access controls
- Remote controllable
- Small processor footprint
- Upgradeable firmware
- 2.5" x 4" x .75", 3 oz.
- Works even better along with Darbee Visual Presence™ processors such as the Darblet™

Applications – HDMI enabled products

- ✓ Profoundly improves CCTV image quality
- ✓ Sees through fog and haze in real time
- ✓ Improves poor quality legacy video
- ✓ Improves IPTV feeds
- ✓ Works with telescopes and microscopes

Darbee Reveal is implemented as an inline HDMI video processor

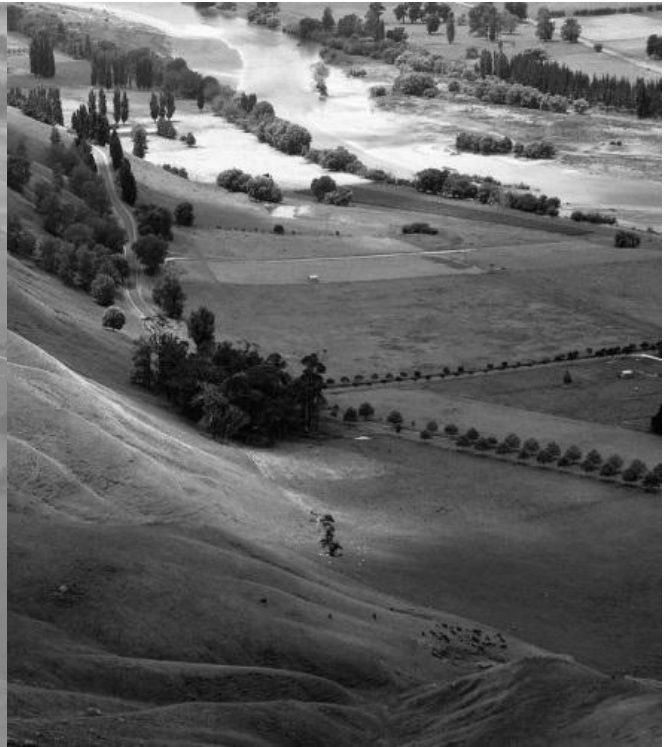


www.DarbeeVision.com info@darbeevision.com

1073 N. Batavia Street, Suite A, Orange CA 92867 (657) 600-8241

Darbee Reveal™

Sample Image



Source Image

Darbee Reveal Processing



www.DarbeeVision.com info@darbeevision.com

1073 N. Batavia Street, Suite A, Orange CA 92867 (657) 600-8241